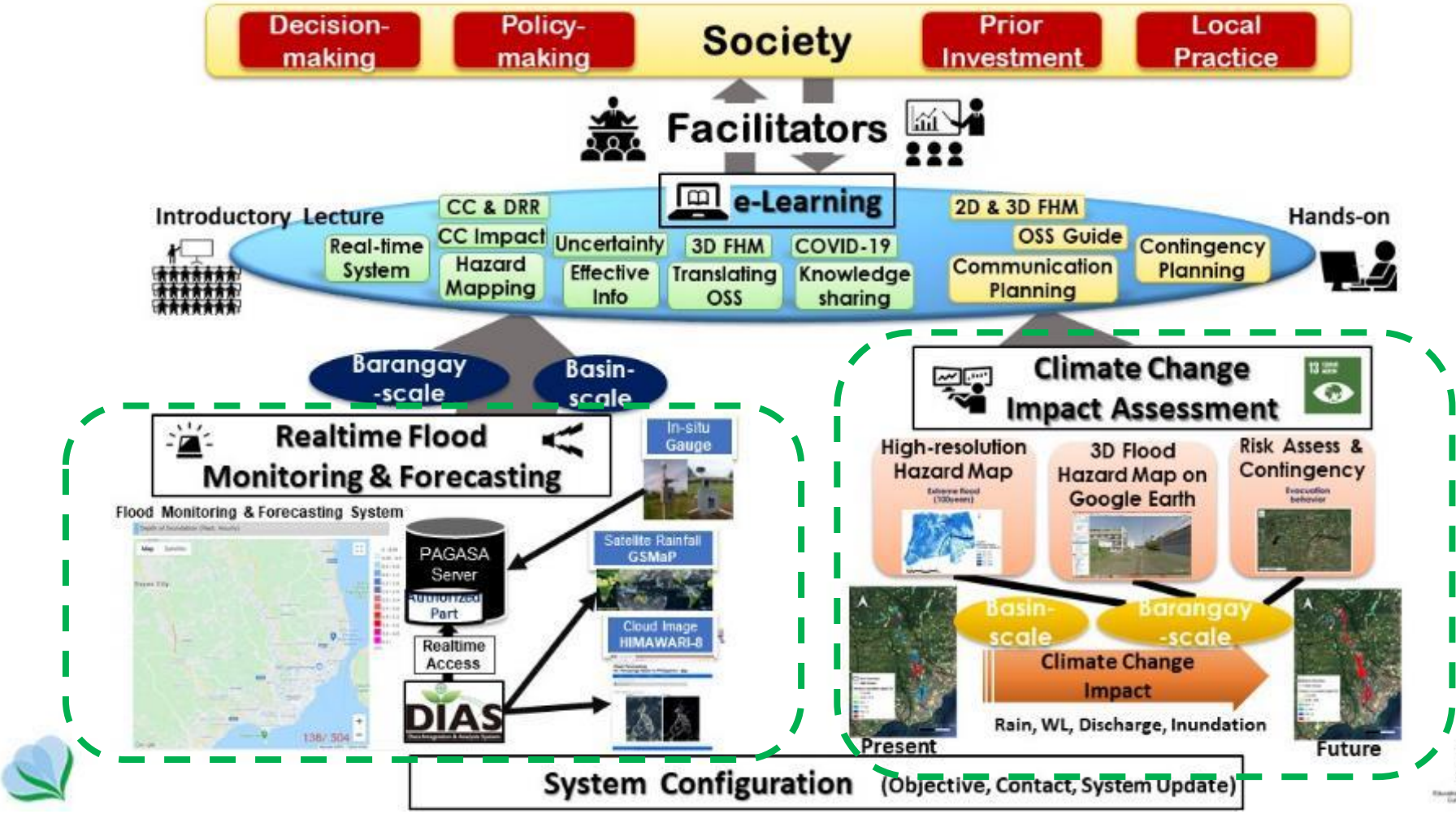


# 2022 AWCI Session Country Report of the Philippines

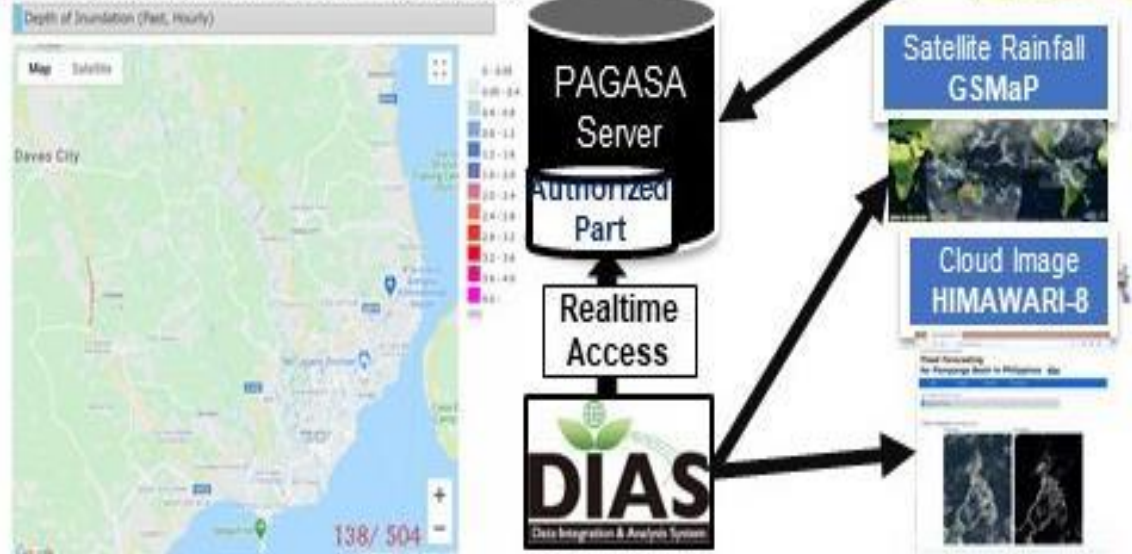


## ONLINE SYNTHESIS SYSTEM (OSS)

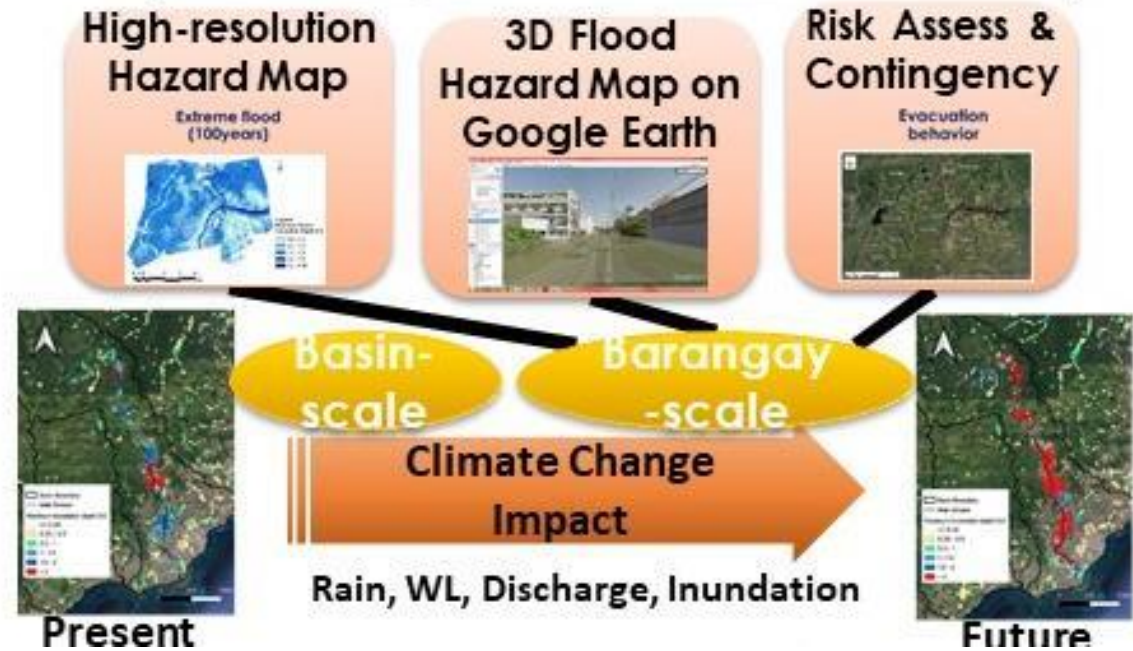


# Realtime Flood Monitoring & Forecasting

Flood Monitoring & Forecasting System

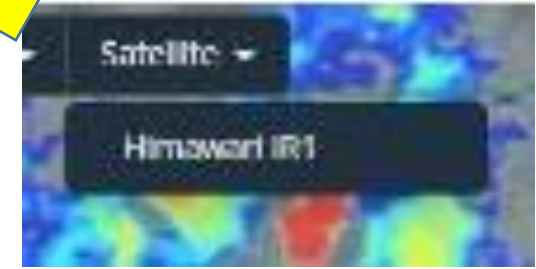
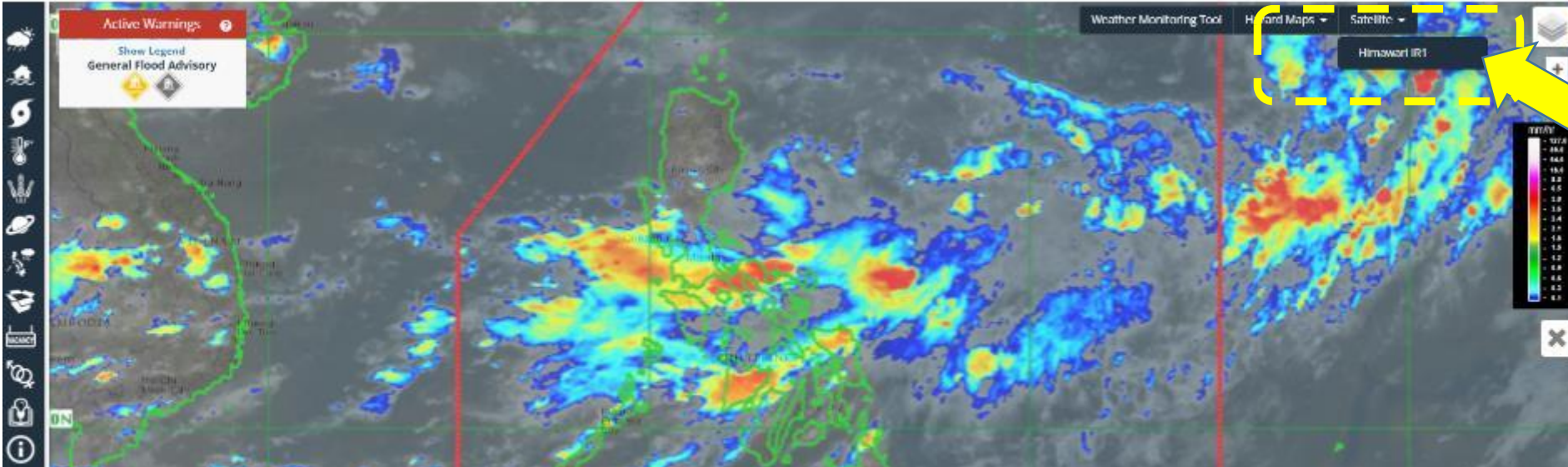


# Climate Change Impact Assessment



# EARTH OBSERVATION





Republic of the Philippines  
Office of the President  
**PhilSA**  
Philippine Space Agency



## Welcome to Philippine Space Agency (PhilSA)

Read the message of the Director General [here](#).

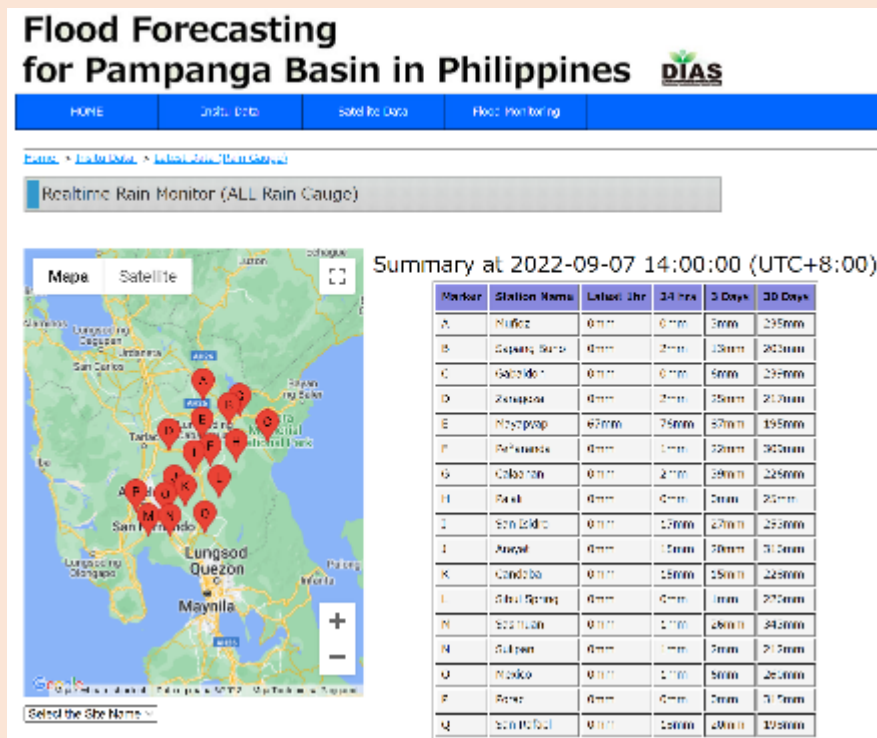
**⚠ Notice to the Public!** PhilSA warns the public on announcements, transactions, communications, and solicitations from unauthorized individuals. Click [this link](#) for more details.

# Contents of Pampanga OSS

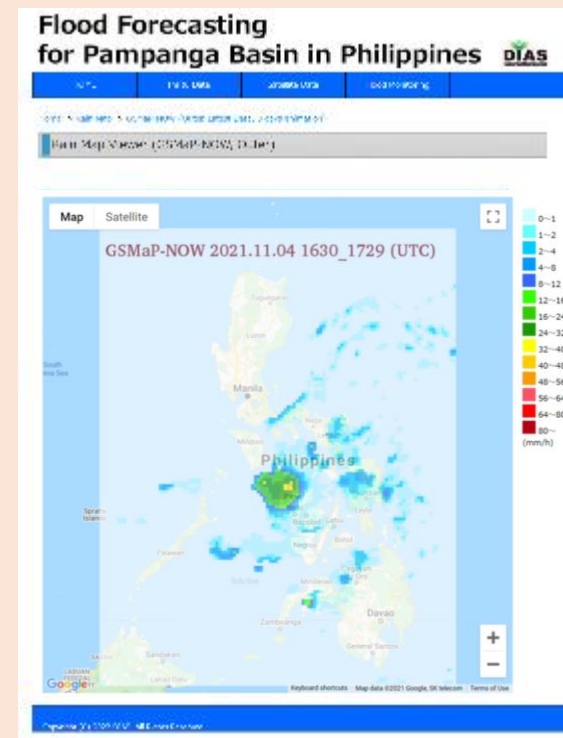
## Rain Data

<http://ph-pampanga.diasjp.net/insitu/>

### Rain Gauge (in-situ)



### Rain Map (GSMaP)



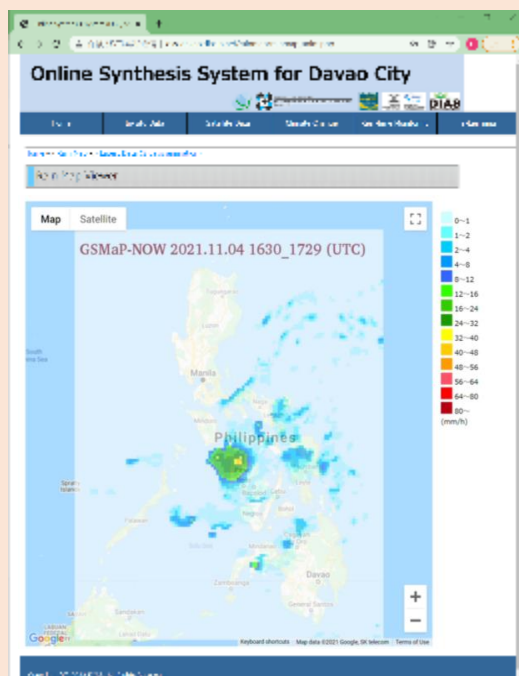


# Contents of Davao OSS

## Satellite Data

<http://oss-davao.diasjp.net/rainmap/>

### Rain Map (GSMaP)



### Cloud Imagery (Himawari-8)



### Cloud Imagery Animation (Himawari-8)



Contents of satellite data

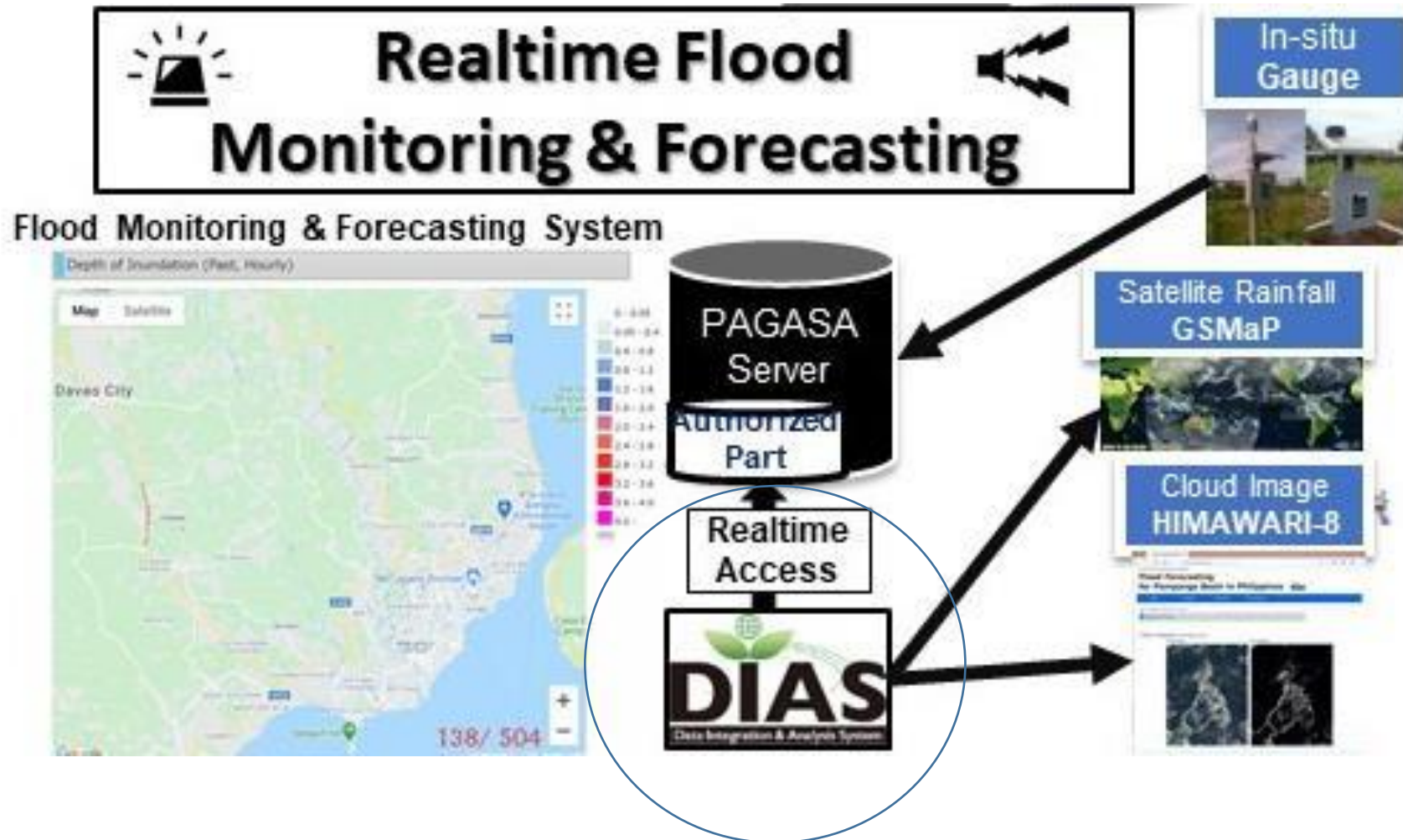
# Contents of Davao OSS

Special archive sites for Ty.  
Ulysses (Ty. Vamco) 2020  
are also available.

The screenshot shows the 'Online Synthesis System for Davao City' website. The browser address bar indicates the URL: `oss-davao.diasjp.net/rainmap/rainmap_anim_20201112outer.php`. The page features a navigation menu with options: Home, In-situ Data, Satellite Data, Climate Change, Real-time Monitoring, and e-Lea. A dropdown menu is open under 'Satellite Data', listing several options. The option 'Rain Map (outer, Ulysses, 2020)' is highlighted with a red box. Below the menu, there is a 'Map' and 'Satellite' toggle, and a rain map visualization for 'GSMaP-NOW 2020.11.12 0100\_0159 (UTC)'. A legend on the right side of the map shows a color scale for precipitation intensity, ranging from 0~1 to 24~32.

Intensity Range	Color
0~1	Lightest Blue
1~2	Light Blue
2~4	Medium Light Blue
4~8	Medium Blue
8~12	Dark Blue
12~16	Light Green
16~24	Medium Green
24~32	Dark Green

# DATA INTEGRATION INCORPORATING SATELLITE-BASED PRODUCTS



# Flood Forecasting for Pampanga Basin in Philippines

HOME	Insitu Data	Satellite Data	Flood Monitoring
------	-------------	----------------	------------------

[Home](#) -> [Flood and Inundation](#) -> [Flood and Inundation \(RRI Monitoring, 2011/09/26 - 10/5\)](#)

Depth of Inundation (RRI Monitoring, 10 Days Animation (Fast), 2011/09/26-10/5)

